

Percussive tools



Chipping hammers, needle pistols

SHV 150

- To remove welding cinder and paint as well as for concrete plastering
- Extremely low vibrations level: 2 m/s^2
- Patented vibration system
- Noise level under 80 dB(A)
- Blowing function available on request

Needle pistols

- Versatile use for burring, cleaning, separating slag, trimming of castings, roughening, removing of paint
- Easy change of needles with bayonet joint
- Vibration level $\leq 2 \text{ m/s}^2$
- Patented vibration system
- Low air consumption



SHV 150

GNV 19 | GNV 28

Technical data

Type		SHV 150	GNV 19	GNV 28	NGV 18
Order No.		35970-00-6	60000-73-6	60003-89-6	29701-11-6
Valve		lever	lever	lever	lever
Number of blows	per minute	9 000	6 600	5 500	8 700
Frequency	Hz	150	110	91	145
Exhaust air		to the front	to the front	to the front	to the front
Vibration	m/s^2	2.0	≤ 2.0	≤ 2.5	3.5
Number of needles		—	19	28	18
Needle length	mm	—	127	140	125
Needle diameter	mm	—	3.2	3.2	3.0
Noise level	dB(A)	76	98	99	93
Air consumption	l/sec	1.5	2.2	2.3	1.6
Machine diameter	mm	40	49	49	40
Machine length	mm	210	272	290	310
Weight	kg	1.45	2.40	3.05	1.95
Hose I.D.	mm	6	10	10	10
Connection		G 1/4" i	G 1/4" i	G 1/4" i	G 1/4" i
Accessories supplied		wrench	set of needles	set of needles	set of needles

Power and free speed at 6 bar operating pressure. Compressed air quality: oiled.

Accessories | Flat chisels, spare needles

Für Type		SHV 150	GNV 19	GNV 28	NGV 18
Flat chisel, carbide metal equipped	100 × 10 mm	39525606	—	—	—
Flat chisel, carbide metal equipped	100 × 17 mm	39525616	—	—	—
Flat chisel, carbide metal equipped	100 × 36 mm	39525626	—	—	—
Set of spare needles		—	9376918	9376919	9376917



NGV 18

Air riveting hammers, holders

The special ones: 8.8 – 14.1 kg

Economic

The F+K riveting and cutting hammers are of low vibration and silent. Handle bar and cylinder are elastic and connected not force-fit. Additional dampening elements and silencers ensure the hammers to be environment friendly and easy to use tools.

Shearing hammer FK 120.3, FK 141.3

- To shear rivets mit shearing chisels and remove the rivet with a knock-out chisel

Riveting hammers

- To set rivets with a riveting header



Technical data

Type		FK 120.3	FK 141.3	G 75
Insert end				
Round	R 23 × 65	526029	—	—
Round	R 31 × 70	—	526059	525651
Illustration		1	1	4
Fitting spring		●	●	—
Closed handle, steel		●	●	—
To shear rivets up to	∅	16	25	—
To set rivets up to	∅	—	—	—
Air consumption	m ³ / min	0.60	0.95	—
Piston diameter	mm	30	30	75
Piston stroke at 6 bar to rivet diameter	mm	—	—	2 650 N / 27
Piston stroke	mm	197	300	90
Length	mm	555	690	245
Weight	kg	8.8	14.1	9.0
Hose I. D.	mm	13	15	13
Connection		G 3/8" i	G 1/2" i	G 3/8" i

Power at 6 bar operating pressure.

Suitable

Riveting headers (set rivets) *see page 136*

Knock-out chisels (remove) *see page 136*

Shearing chisel *see page 136*

Air chisel hammers

The light ones: 0.68 – 1.14 kg

With chisel retaining spring



1



2

High-performance

With a weight starting from 0.68 kg F+K's lightweight chisel hammers are extremely versatile.

- Sensitive, controllable valve
- Recoil absorbing construction
- Sound absorbing exhaust ring
- Easy to maintain

Special solutions available on request.

Technical data

Type		FK 101.1	FK 101.2	FK 101.3	FK 101.4	FK 111.1	FK 111.2	FK 111.3	FK 111.4
Illustration		1	2	3	4	1	2	3	4
Insert end									
Round	R 10.3 × 36	525181	525183	525193	525162	525187	525158	525195	525156
Round hexagon	S 12.5 × 36	525180	525182	525192	525172	525186	525157	525194	525166
Pistol handle		●	—	—	—	●	—	—	—
Straight handle with push button		—	●	—	—	—	●	—	—
Straight handle with lever valve		—	—	●	—	—	—	●	—
Open handle with aluminium		—	—	—	●	—	—	—	●
Number of blows	per minute	6 100	6 100	6 100	6 100	4 400	4 400	4 400	4 400
Air consumption	m ³ / min	0.32	0.32	0.32	0.32	0.32	0.32	0.32	0.32
Piston diameter	mm	16	16	16	16	16	16	16	16
Piston stroke	mm	30	30	30	30	45	45	45	45
Length	mm	180	172	162	214	188	194	193	236
Weight	kg	0.68	0.77	0.72	1.04	0.77	0.80	0.82	1.14
Hose I. D.	mm	8	8	8	8	8	8	8	8
Connection		G 1/4 " i	G 1/4 " i	G 1/4 " i	G 1/4 " i	G 1/4 " i	G 1/4 " i	G 1/4 " i	G 1/4 " i

Power at 6 bar operating pressure.



3



4

Air chisel hammers

The light ones: 1.3 – 3.4 kg

With chisel retaining spring



1



2

Anti vibration

F+K chisel hammers FK 102 G / FK 103 G convinces by its high ergonomics. The load by vibrations is reduced up to 60 %. With a sensible relieve of the wrists and elbows of the user.

Technical data

Type		FK 102.4	FK 102.5	FK 102.G	FK 103.4	FK 103.5	FK 103.G	M 13	M 23
Illustration		1	2	1	1	2	1	siehe Set	siehe Set
<i>Insert end</i>									
Round	R 14,3 × 50	5251530	5251260	—	5251630	5251290	5251460	33600-10-5	33750-10-5
Round hexagon (hex × 50)	RS 12,5 × 10,5 × 50	—	—	—	—	—	—	33600-20-5	33750-20-5
Round hexagon (hex × 50)	RS 14,3 × 12,5 × 50	5251531	5251261	5251411	5251631	5251291	5251461	33600-30-5	33750-30-5
Open handle with aluminium		●	—	●	●	—	●	●	●
Closed handle, steel		—	●	—	—	●	—	—	—
Number of blows	per minute	3 200	3 200	3 100	2 200	2 200	2 300	4 400	2 700
Air consumption	m ³ / min	0.42	0.42	0.42	0.42	0.42	0.42	0.42	0.42
Piston diameter	mm	20	20	20	20	20	20	20	20.5
Piston stroke	mm	60	60	60	90	90	60	40	40
Length	mm	290	310	315	335	358	365	200	205
Weight	kg	1.80	3.10	2,40	2.10	3.40	2.60	1.30	2.30
Hose l. D.	mm	10	10	10	10	10	10	10	10
Connection		G 1/4 " i	G 1/4 " i	G 1/4 " i	G 1/4 " i	G 1/4 " i	G 1/4 " i	G 1/4 " i	G 1/4 " i

Power at 6 bar operating pressure.



Chisel hammer set FK 102.4



Chisel hammer set M 13 / M 23

Chisel hammer set

M 13 RS 14.3	33620-30-5
M 23 RS 14.3	33760-30-5
FK 102.4 RS 14.3	33760-80-6

Air chisel hammers

The powerful ones: 4.1–7.9 kg



1

Sound absorbing

The silencer makes the quality chisel hammers of the middleweight class audibly more quiet. By turning the exhaust air can be led in the most favorable direction. The vibration dampening connection between cylinder and hand grip sensitively relieves the hand-arm system of the user.

Easy to maintain

The construction principle applied to the essentials makes service easier. Consequent use of tested materials enlarges the life time and lowers costs. Maintenance costs and downtimes are reduced.

Technical data

Type		FK 3.3	FK 4.3	FK 5.3	FK 6.3
Illustration		1	1	1	1
Insert end					
Round	R 17.5 × 60	5260532	5260542	5260552	5260562
Round	R 20 × 60	5260534	5260544	5260554	5260564
Round hexagon	RS 17.5 × 14.8 × 60	5260531	5260541	5260551	5260561
Round hexagon	RS 20 × 17 × 60	5260533	5260543	5260553	5260563
Conical		526053	526054	526055	526056
Haltefeder		●	●	●	●
Closed handle, steel		●	●	●	●
Number of blows	per minute	2 100	3 200	1 500	1 200
Air consumption	m ³ / min	0.62	0.82	0.90	0.70
Piston diameter	mm	23	30	30	30
Piston stroke	mm	83	72	102	137
Length	mm	345	365	415	406
Weight	kg	4.10	6.30	6.90	7.90
Hose I. D.	mm	13	13	13	13
Connection		G 3/8 " i	G 3/8 " i	G 3/8 " i	G 3/8 " i

Power at 6 bar operating pressure.



New product DR 5

With vibration dampening system
(vibration value 2.71 m/s²)

Air chisel hammers

The powerful ones: 4.15 – 6.70 kg



1



2



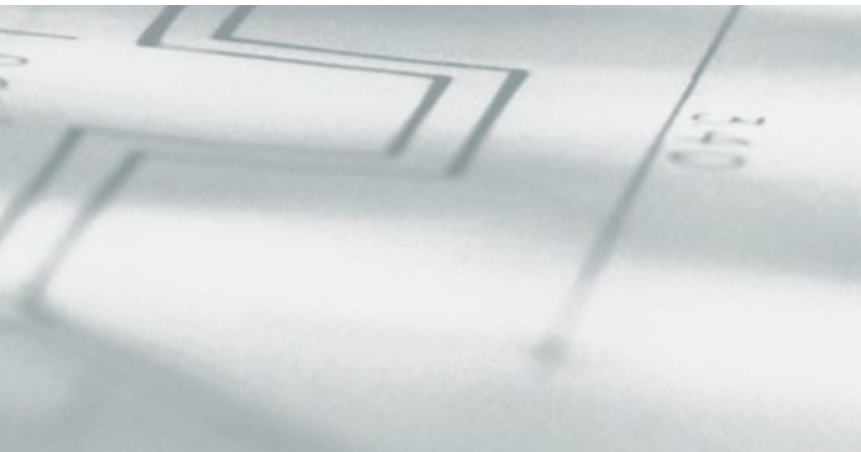
3

Technical data

Type		FK 2	FK 3	FK 4	FK 5	S 5700	DR 5
Illustration		1	1	1	1	2	3
Insert end							
Round	R 17.5 × 60	5259082	5259092	5259292	5259392	—	—
Round	R 20.0 × 60	5259084	5259094	5259294	5259394	35700505	—
Round hexagon	RS 17.5 × 14,8 × 60	5259081	5259091	5259291	5259391	—	* 5251011
Round hexagon	RS 20 × 17 × 60	5259083	5259093	5259293	5259393	35700705	* 5251013
Conical	SK 20-12	—	—	—	—	—	—
Screw cap		●	●	●	●	●	—
Closed handle, steel		●	●	●	●	●	●
Number of blows	per minute	2 800	2 100	3 200	1 500	2 000	2 200
Air consumption	m ³ / min	0.54	0.62	0.82	0.90	0.65	0.70
Piston diameter	mm	23	23	30	30	30	25
Piston stroke	mm	54	83	71	101	90	101
Length	mm	338	374	378	430	410	380
Weight	kg	4.15	4.48	6.25	6.73	6.70	5.50
Hose I. D.	mm	13	13	13	13	13	10
Connection		G 3/8" i	G 3/8" i	G 3/8" i	G 3/8" i	G 3/8" i	G 3/8" i

Power at 6 bar operating pressure.

* With retaining spring



Powerful Accessories see from page 132

Air Euro hammers

The strong ones: 8.8 – 12.0 kg



1

2

Silent, light, quiet running

F+K Euro hammers are indispensable when it comes up to challenging demolition works on construction sites.

Optimized power-weight ratio, noise and vibration levels and the ergonomic hand grips ensure an easy working without a quick physical fatigue.

Versions

- with silencer
- without silencer
- with guided exhaust air

Technical data

Type		FK 2008 R 10	FK 2008.11	FK 2008 R 11	FK 2008 R 12	FK 2008 R 31	FK 2008 R 41	FK 2008 R 71
Illustration		1	2	2	4	3	3	2
Insert end								
Round	R 25 × 75	52640710	52640211	52640711	52640712	52640731	—	—
Hexagon	S 22 × 82.5	—	—	—	—	—	52640741	52640771
Closed handle		●	●	●	●	●	●	●
Screw cap		●	●	●	●	—	—	●
Catch		—	—	—	—	●	●	—
Silencer		—	●	●	●	●	●	●
Sleeve valve guide		●	—	●	●	●	●	●
Guided exhaust air		—	—	—	●	—	—	—
Number of blows	min ⁻¹	1 700	1 700	1 700	1 700	1 700	1 700	1 700
Air consumption	m ³ / min	1.00	1.00	1.00	1.05	1.05	1.05	1.05
Piston diameter	mm	35	35	35	35	35	35	35
Piston stroke	mm	117	98	117	117	117	117	117
Length	mm	542	573	542	515	520	520	520
Weight	kg	10.0	8.8	10.4	12.0	11.7	11.7	9.8
Hose I. D.	mm	19	19	19	19	19	19	19
Connection external thread		G 3/4 "	G 3/4 "	G 3/4 "	G 3/4 "	G 3/4 "	G 3/4 "	G 3/4 "

Power at 6 bar operating pressure.

Accessories

Grease ampule	307/1655
---------------	----------

Air Euro hammers

The strong ones: 12.0 – 14.0 kg



3



4

Technical data

Type		FK 2012 R 10	FK 2012 R 11	FK 2012 R 12	FK 2012 R 30	FK 2012 R 31
Illustration		1	2	4	3	3
Insert end						
Round	R 25 × 75	52642010	52642011	52642012	52642030	52642031
Closed handle		●	●	●	●	●
Screw cap		●	●	●	—	—
Catch		—	—	—	●	●
Silencer		—	●	●	—	●
Sleeve valve guide		●	●	●	●	●
Guided exhaust air		—	—	●	—	—
Number of blows	min ⁻¹	1 200	1 200	1 200	1 200	1 200
Air consumption	m ³ / min	1.10	1.10	1.10	1.10	1.10
Piston diameter	mm	37	37	37	37	37
Piston stroke	mm	150	150	150	150	150
Length	mm	575	575	575	575	580
Weight	kg	12.0	12.8	14.0	13.0	13.8
Hose I. D.	mm	19	19	19	19	19
Connection external thread		G 3/4 "	G 3/4 "	G 3/4 "	G 3/4 "	G 3/4 "

Power at 6 bar operating pressure.

Air Euro hammers

The strong ones: 13.0 – 14.8 kg



Technical data

Type		FK 2012.40	FK 2012 R 41	FK 2012.42	FK 2012 R 61	FK 2012 R 81
Illustration		1	2	3	4	4
Insert end						
Round	R 25 × 75	—	—	—	52642061	—
Hexagon	S 22 × 82.5	52641040	52642041	52641042	—	52642081
Closed handle		●	●	●	—	—
Double handle		—	—	—	●	●
Screw cap		—	—	—	—	●
Catch		●	●	●	●	—
Silencer		—	●	●	●	●
Sleeve valve guide		—	●	—	●	●
Guided exhaust air		—	—	●	—	—
Number of blows	min ⁻¹	1 200	1 200	1 200	1 200	1 200
Air consumption	m ³ / min	1.10	1.10	1.10	1.10	1.10
Piston diameter	mm	37	37	37	37	37
Piston stroke	mm	150	150	150	150	150
Length	mm	575	580	580	555	555
Weight	kg	13.0	13.8	14.8	14.8	14.8
Hose I. D.	mm	19	19	19	19	19
Connection external thread		G 3/4"	G 3/4"	G 3/4"	G 3/4"	G 3/4"

Power at 6 bar operating pressure.

Air Euro hammers

The strong ones: 13.6 – 17.0 kg



1



2



3



4

Technical data

Type		FK 2015.10	FK 2015 R 10	FK 2015 R 11	FK 2015 R 21	FK 2015 R 30	FK 2015 R 31	FK 2015 R 71
Illustration		1	1	2	4	1 (S. 122)	3	2
Insert end								
Round	R 25 × 75	52641110	52642110	52642111	—	52642130	52642131	—
Hexagon	S 22 × 82.5	—	—	—	52642121	—	—	52642171
Closed handle		●	●	●	—	●	●	●
Double handle		—	—	—	●	—	—	—
Screw cap		●	●	●	—	—	—	●
Catch		—	—	—	●	●	●	—
Silencer		—	—	●	●	—	●	●
Sleeve valve guide		—	●	●	●	●	●	●
Number of blows	per minute	830	830	830	830	830	830	830
Air consumption	m ³ / min	1.15	1.15	1.15	1.15	1.15	1.15	1.15
Piston diameter	mm	35	35	35	35	35	35	35
Piston stroke	mm	235	235	235	235	235	235	235
Length	mm	686	686	686	665	686	686	686
Weight	kg	13.6	15.0	15.5	17.0	16.0	16.5	15.8
Hose I. D.	mm	19	19	19	19	19	19	19
Connection external thread		G 3/4 "	G 3/4 "	G 3/4 "	G 3/4 "	G 3/4 "	G 3/4 "	G 3/4 "

Power at 6 bar operating pressure.

Air Euro hammers

The strong ones: 19.2 – 25.0 kg



1

2

Technical data

Type		FK 2020 R 50	FK 2020 R 51	FK 2020.61	FK 2020 R 90	FK 2020 R 91	FK 2020 R 94
Illustration		—	1	2	—	2	2
<i>Insert end</i>							
Round	R 25 × 75	52642250	52642251	52641261	—	—	—
Hexagon	S 25 × 108	—	—	—	52642290	52642291	52642294
Double handle		●	●	●	●	●	●
Screw cap		●	●	—	—	—	—
Catch		—	—	●	●	●	●
Silencer		—	●	●	—	●	●
Sleeve valve guide		●	●	—	●	●	●
Anti vibration with silencer		—	—	—	—	—	●
Number of blows	per minute	860	860	860	860	860	860
Air consumption	m ³ / min	1.20	1.20	1.20	1.20	1.00	1.00
Piston diameter	mm	40	40	40	40	40	40
Piston stroke	mm	225	225	225	225	225	225
Length	mm	665	665	665	665	730	665
Weight	kg	19.2	20.2	20.0	21.0	25.0	25.0
Hose I. D.	mm	19	19	19	19	19	19
Connection external thread		G 3/4 "	G 3/4 "	G 3/4 "	G 3/4 "	G 3/4 "	G 3/4 "

Power at 6 bar operating pressure.

High performance

The anti vibration system of the F+K rammers (2.1 m/s²) ensures a sensitively relieve of the hands and arms of the user.

- With round or guided rod piston, polygon or square
- With safety lever valve
- Sound absorbing exhaust ring
- Turning air connection
- With short or long version
- Optional with silencer for models ST 2 to ST 20
- Versions polygon and square: prevents the rod from turning



Technical data

Type		ST 03 R	ST 02 R	ST 02 V	ST 1 R 2	ST 1 P 2
Order No.		525485	525042	525043	5261112	5261122
Illustration		1	2	2	3	3
Piston form		round	round	square	round	polygon
Morse taper	1	metr. 10	●	●	—	—
Morse taper	2	—	—	—	●	●
Lever valve hood		push button	●	●	●	●
Number of blows	per minute	2 500	1 900	1 900	900	900
Air consumption	m ³ / min	0.20	0.40	0.40	0.50	0.50
Piston diameter	mm	16	23	23	26	26
Piston stroke	mm	40	70	70	125	125
Length total	mm	230	365	365	515	515
Weight	kg	1,0	2.5	2.5	5.0	5.0
Hose I. D.	mm	10	10	10	10	10
Connection		G 1/4 " i	G 1/4 " i	G 1/4 " i	G 1/4 " i	G 1/4 " i
Butt max.	kg	0.30	0.75	0.75	0.85	0.85

Power at 6 bar operating pressure.

Suitable ramming feet *see page 130*

Air rammers

The reliable ones: 3.9 – 9.4 kg



Technical data

Type		S 5100 with valve hood 35100205	S 5100 with short lever valve 35100305	S 5100 with long lever valve 35100405	S 5401 with short lever valve 35400215	S 5401 with long lever valve 35400315
Order No.		35100205	35100305	35100405	35400215	35400315
Illustration		1	2	3	2	3
Piston form		square	square	square	square	square
Morse taper	1	●	●	●	—	—
Morse taper	2	—	—	—	●	●
Lever valve hood		●	—	—	—	—
Lever valve short		—	●	—	●	—
Lever valve long		—	—	●	—	●
Number of blows	per minute	720	720	720	680	680
Air consumption	m ³ / min	0.40	0.40	0.40	0.70	0.70
Piston diameter	mm	22.50	22.50	22.50	36.00	36.00
Piston stroke	mm	155	155	155	175	175
Length total	mm	530	700	1260	840	1080
Weight	kg	3.90	4.65	5.50	8.80	9.40
Hose I. D.	mm	10	10	10	13	13
Connection		G 1/4 " i	G 1/4 " i	G 1/4 " i	G 3/8 " i	G 3/8 " i
Butt max.	kg	0.75	0.75	0.75	1.80	1.80

Power at 6 bar operating pressure.

Suitable ramming feet *see page 130*

Air rammers

The reliable ones: 5.2 – 5.6 kg



1



Vibration dampener

Technical data

Type		ST 1 AR 2	ST 1 AP 2	ST 1 AR 1	ST 1 AP 1
Order No.		5261132	5261142	5261131	5261141
Illustration		1	1	1	1
Piston form		round	polygon	round	polygon
Morse taper	2	●	●	●	●
Lever valve short		●	●	—	—
Lever valve long		—	—	●	●
Number of blows	per minute	900	900	900	900
Air consumption	m ³ / min	0.50	0.50	0.50	0.50
Piston diameter	mm	26	26	26	26
Piston stroke	mm	125	125	125	125
Length total	mm	665	665	915	915
Weight	kg	5.2	5.2	5.6	5.6
Hose I. D.	mm	10	10	10	10
Connection		G 3/8 " i	G 3/8 " i	G 3/8 " i	G 3/8 " i
Butt max.	kg	0.85	0.85	0.85	0.85

Power at 6 bar operating pressure.

Accessories

Vibration dampener (for rammers ST 1 AP / AR and ST 2 – 20)	52 / 2270
Reduction (for rammers ST 1 AP / AR)	306 / 0218

Vibration dampener for setup change

- Reduces the vibration load up to 50 %
- Example ST 2 R 1:
without dampening system 25.2 m / s²
with dampening system 9.8 m / s²

Suitable ramming feet *see page 130*

Air rammers

The reliable ones: 8.7 – 12.7 kg

Vibration-damped



1

Technical data

Type		ST 1 AP 1 G	ST 1 AR 1 G	ST 2 P 1 G	ST 2 R 1 G
Order No.		5260081	5260091	5261531	5261541
Illustration		1	1	1	1
Piston form		polygon	round	polygon	round
Morse taper	2	●	●	●	●
Lever valve long		●	●	●	●
Number of blows	number of blows	900	900	800	800
Air consumption	m ³ / min	0.50	0.50	0.65	0.65
Piston diameter	mm	26	26	32	32
Piston stroke	mm	125	125	180	180
Length total	mm	900	900	1 080	1 080
Weight	kg	8.7	8.7	12.7	12.7
Hose I. D.	mm	13	13	13	13
Connection		G 3/8 " i	G 3/8 " i	G 3/8 " i	G 3/8 " i
Butt max.	kg	0.85	0.85	1.80	1.80

Power at 6 bar operating pressure.

Suitable ramming feet *see page 130*

Air rammers

The reliable ones: 8.8 – 12.5 kg



1



2

Technical data

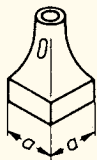
Type		ST 2 R 1	ST 2 R 5	ST 2 P 1	ST 2 P 5	ST 20 R 1	ST 20 R 5	ST 20 P 1	ST 20 P 5	ST 3 8 P
Order No.		5261151	5261155	5261161	5261165	5261171	5261175	5261181	5261185	525490
Illustration		1	2	1	2	1	2	1	2	1
Piston form		round	round	polygon	polygon	round	round	polygon	polygon	polygon
Morse taper	2	●	●	●	●	●	●	●	●	●
Lever valve long		●	●	●	●	●	●	●	●	●
Silencer		—	●	—	●	—	●	—	●	—
Number of blows	number of blows	800	800	800	800	800	800	800	800	750
Air consumption	m ³ / min	0.65	0.65	0.65	0.65	0.65	0.65	0.65	0.65	0.75
Piston diameter	mm	32	32	32	32	32	32	32	32	38
Piston stroke	mm	180	180	180	180	180	180	180	180	215
Length total	mm	1 190	1 190	1 190	1 190	1 190	1 190	1 190	1 190	1 340
Weight	kg	8.8	8.8	8.8	8.8	9.4	9.4	9.4	9.4	12.5
Hose I. D.	mm	10	10	10	10	10	10	10	10	13
Connection		G 3/8 " i	G 3/8 " i	G 3/8 " i	G 3/8 " i	G 3/8 " i	G 3/8 " i	G 3/8 " i	G 3/8 " i	G 3/8 " i
Butt max.	kg	1.80	1.80	1.80	1.80	1.80	1.80	1.80	1.80	3.0

Power at 6 bar operating pressure.

Suitable ramming feet *see page 130*

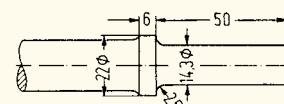
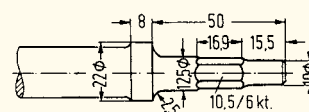
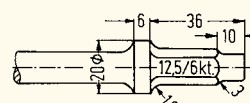
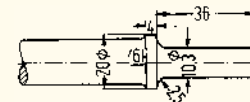
Accessories

Ramming feet



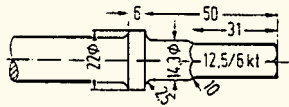
	Steel	Solid rubber	Morsekegel cm	Dimension mm	Weight kg	Order No.
Round						
	●	—	Metr. 10	30	0.15	527183
	●	—	1	40	0.20	529010
	●	—	1	60	0.50	39710006
	●	—	2	40	0.30	529210
	●	—	2	60	0.57	529230
	●	—	2	80	0.85	39720006
teethed	●	—	2	80	1.10	30592571
	—	●	1	40	0.36	39715006
	—	●	1	50	0.56	30590203
	—	●	1	60	0.60	30590303
	—	●	1	75	0.70	30590403
	—	●	2	40	0.30	30592103
	—	●	2	60	0.57	39725006
	—	●	2	75	0.68	39725016
Quadratic						
	●	—	1	40 × 40	0.24	529014
	●	—	1	60 × 60	0.43	39711006
	—	●	1	80 × 80	0.60	39716006
	●	—	2	40 × 40	0.60	529214
	●	—	2	60 × 60	0.69	529234
	●	—	2	80 × 80	0.85	39721006
	●	—	2	100 × 100	1.50	39721016
	—	●	2	80 × 80	0.70	39726006
Square						
	●	—	1	60 × 20	0.25	529060
	●	—	2	60 × 20	0.75	39722006
	●	—	2	70 × 15	0.80	529241
	●	—	2	75 × 50	0.78	39723006
teethed	●	—	2	80 × 33	0.75	529236
	—	●	1	50 × 25	0.45	39717016
	—	●	1	75 × 25	0.50	30590423
	—	●	1	75 × 45	0.53	39717006
	—	●	2	90 × 25	0.41	30592223
	—	●	2	75 × 25	0.50	30592423
	—	●	2	75 × 45	0.53	39727006
Wedge						
	—	●	1	50 × 50	0.42	39718006
	—	●	1	70 × 50	0.50	39718016
	—	●	2	50 × 50	0.36	39728006
	—	●	2	70 × 50	0.44	39728016
Wedge form (special model)						
	●	—	10	30	0.11	527183
	●	—	10	40 × 40	0.11	527190
	●	—	2	200	0.80	5292920
	●	—	2	450	1.20	5292922
	●	—	2	800	1.70	5292924

Type	Effect. length mm	Cutting width mm	Weight kg	Order No.
Insert end R 10.3 × 36 mm with collar				
Pointed chisel	150	—	0.20	39500356
Flat chisel	125	15	0.20	30522010
Flat chisel	150	15	0.25	39500406
Flat chisel	195	15	0.25	30522011
Flat chisel	250	15	0.30	30522012
Blank	125	—	0.20	30522000
<i>Special solutions</i>	<i>More lengths on request.</i>			
Insert end S 12.5 × 36 mm with collar				
Pointed chisel	125	—	0.15	39502356
Pointed chisel	200	—	0.25	30588051
Flat chisel	125	15	0.15	39502406
Flat chisel	195	15	0.25	39502416
Flat chisel	250	15	0.30	39502426
Breitmeißel	125	40	0.20	30588040
Blank	125	—	0.15	39502306
<i>Special solutions</i>	<i>More lengths on request.</i>			
Insert end R 12.5 ∅ / 10.5 / hex. ∅ 10 × 50 mm with collar				
Pointed chisel	135	—	0.20	39501356
Flat chisel	135	15	0.20	39501406
Blank	135	—	0.20	39501306
<i>Special solutions</i>	<i>More lengths on request.</i>			
Insert end R 14.3 × 50 mm with collar				
Pointed chisel	125	—	0.25	30523050
Pointed chisel	150	—	0.30	39503356
Pointed chisel	250	—	0.40	30523052
Flat chisel	135	20	0.30	30523010
Flat chisel	150	15	0.30	39503406
Flat chisel	250	15	0.40	39503426
Flat chisel	250	20	0.45	30523012
Blank	150	—	0.30	39503306
Blank	200	—	0.35	39503316
Blank	250	—	0.40	39503326
<i>Special solutions</i>	<i>More lengths on request.</i>			



Accessories

Chisels

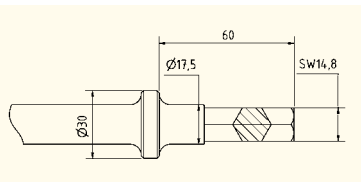


Type	Effect. length mm	Cutting width mm	Weight kg	Order No.
Insert end RS 14.3 × 12.5 × 50 mm with collar				
Pointed chisel	135	—	0.20	39504356
Pointed chisel	200	—	0.27	39504366
Pointed chisel	250	—	0.30	30589052
Flat chisel	135	15	0.20	39504406
Flat chisel	135	20	0.20	30589010
Flat chisel	200	15	0.27	39504416
Flat chisel	200	20	0.27	30589011
Flat chisel	250	20	0.30	30589012
Flat chisel	400	20	0.55	30589044
Flat chisel	450	20	0.68	30589045
Flat chisel	500	20	0.75	30589150
Flat chisel	800	20	1.30	30589151
Broad flat chisel	135	30	0.30	30589020
Broad chisel	180	40	0.35	39504506
Broad chisel	180	60	0.40	30589060
Blank	135	—	0.20	39504306
Blank	150	—	0.25	30589000
Blank	200	—	0.27	39504316
Blank	450	—	0.54	39504326

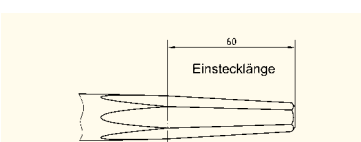
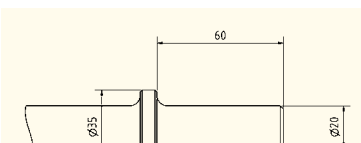
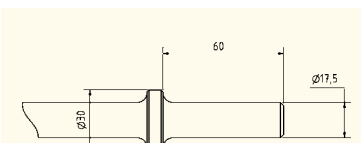
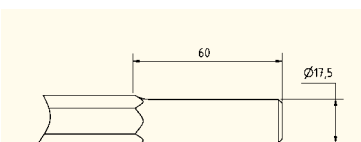
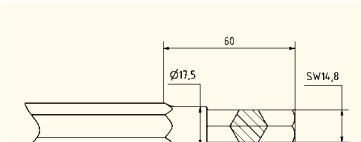
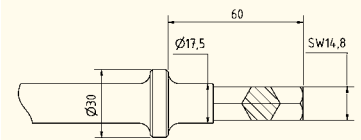
Special solutions More lengths on request.

Type	Effect. length mm	Cutting width mm	Weight kg	Order No.
Insert end RS 17.5 × 14.8 × 60 mm with collar				
Pointed chisel	140	—	0.50	39506356
Pointed chisel	190	—	0.60	39506366
Pointed chisel	260	—	0.70	39506376
Pointed chisel	350	—	0.90	30527053
Pointed chisel	450	—	1.20	30527054
Pointed chisel	600	—	1.60	30527055
Pointed chisel	700	—	2.00	30527057
Pointed chisel	1 000	—	2.60	30527058
Flat chisel	140	20	0.50	39506406
Flat chisel	190	20	0.60	39506416
Flat chisel	260	20	0.70	39506426
Flat chisel	260	30	0.70	30527011
Flat chisel	350	30	0.90	30527013
Flat chisel	450	30	1.20	30527014
Flat chisel	600	30	1.60	30527015
Flat chisel	750	30	2.00	30527016
Flat chisel	1 000	25	2.60	30527017
Flat chisel	1 500	25	3.80	30527019
Flat chisel	2 000	25	4.40	30527020

Special solutions More lengths on request.

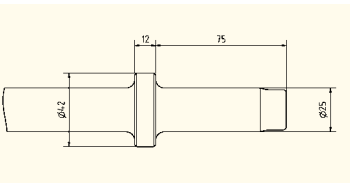
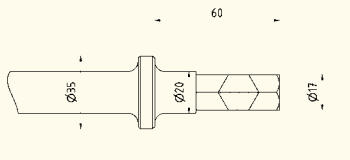


Type	Effect. length mm	Cutting width mm	Weight kg	Order No.
Insert end RS 17.5 × 14.8 × 60 mm with collar				
Broad chisel	200	60	0.70	30527042
Broad chisel	210	95	0.80	39506456
Blank	240	—	0.70	30527001
Special solutions	More lengths on request.			
Insert end RS 17.5 × 14.8 × 60 mm without collar				
Pointed chisel	320	—	0.90	39522376
Flat chisel	140	30	0.70	39522406
Flat chisel	250	30	0.80	39522416
Flat chisel	320	30	0,90	39522426
Flat chisel	440	30	1.00	—
Special solutions	More lengths on request.			
Insert end R 17.5 × 60 mm without collar				
Flachmeißel	440	30	1.50	39521436
Special solutions	More lengths on request.			
Insert end R 17.5 × 60 mm with collar				
Pointed chisel	250	—	0.80	30526051
Pointed chisel	450	—	1.50	30526054
Flat chisel	250	25	0.80	30526011
Flat chisel	260	20	0.80	39505406
Flat chisel	750	25	2.50	30526016
Broad chisel	210	40	0.90	30526021
Blank	260	—	0.80	39505306
Special solutions	More lengths on request.			
Insert end R 20 × 60 mm with collar				
Pointed chisel	250	—	0.90	30528051
Pointed chisel	350	—	1.20	39507356
Pointed chisel	450	—	1.50	39507366
Pointed chisel	750	—	2.60	39507376
Pointed chisel	1 000	—	3.50	39507386
Flat chisel	250	25	0.90	30528011
Flat chisel	450	20	1.50	30528014
Special solutions	More lengths on request.			
Insert end SK 20 – 12				
Flat chisel	260	30	0.60	39525406
Flat chisel	310	30	1.10	39525416
Flat chisel	510	30	1.50	39525426
Flat chisel	1 000	30	3.50	30512017
Special solutions	More lengths on request.			



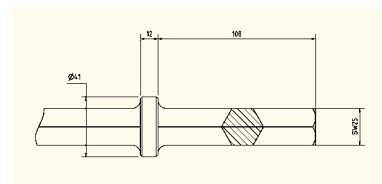
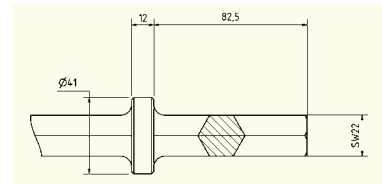
Accessories

Chisels



Type	Effect. length mm	Cutting width mm	Weight kg	Order No.
Insert end RS 20 × 17 × 60 mm with collar				
Pointed chisel	250	—	1.00	30529051
Pointed chisel	350	—	1.20	39508356
Pointed chisel	450	—	1.50	39508366
Pointed chisel	750	—	1.80	39508376
Flat chisel	250	30	1.10	30529011
Flat chisel	350	23	1.20	39508406
Flat chisel	350	30	1.20	30529013
Flat chisel	450	23	1.50	39508416
Flat chisel	450	30	1.50	30529014
Flat chisel	600	30	2.00	30529015
Flat chisel	750	30	2.40	30529016
Flat chisel	1 000	30	3.10	30529017
Flat chisel	1 250	30	3.40	30529018
Broad chisel	210	60	0.70	30529042
Blank	250	—	0.70	30529001
<i>Special solutions</i>	<i>More lengths on request.</i>			
Insert end R 25 × 75 mm with collar				
Pointed chisel	350	—	1.70	39509356
Pointed chisel	450	—	2.00	39509366
Pointed chisel	500	—	2.20	39509376
Pointed chisel	600	—	2.80	30532003
Pointed chisel	800	—	3.50	39509386
Pointed chisel	1 000	—	4.20	39509396
Pointed chisel	1 500	—	6.20	30532007
Pointed chisel	2 000	—	8.10	30532008
Pointed chisel	2 500	—	10.00	30532009
Flat chisel	350	25	1.70	39509406
Flat chisel	450	25	2.00	39509416
Flat spade	400	75	2.90	39509446
Flat spade	425	120	3.50	39509476
<i>Special solutions</i>	<i>More lengths on request.</i>			

Type	Effect. length mm	Cutting width mm	Weight kg	Order No.
Insert end S 22 × 82.5 mm with collar				
Pointed chisel	450	—	1.90	39511356
Pointed chisel	750	—	3.00	30544004
Pointed chisel	1 000	—	3.60	30544005
Pointed chisel	1 500	—	5.20	30544007
Pointed chisel	2 000	—	6.80	30544008
Flat chisel	450	25	1.90	39511406
Flat spade	400	120	3.50	39509486
Digging spade	400	75	3.20	39509456
<i>Special solutions</i>	<i>More lengths on request.</i>			
Insert end S 25 × 108 mm with collar				
Pointed chisel	450	—	2.40	39512356
Pointed chisel	600	—	3.70	30554003
Pointed chisel	1 000	—	4.60	30554005
Pointed chisel	1 500	—	6.40	30554007
Flat chisel	450	30	2.50	39512406
Flat spade	400	120	3.70	39509496
Digging spade	400	75	3.20	39509466
<i>Special solutions</i>	<i>More lengths on request.</i>			



Accessories

Riveting headers, knock-out chisels, shearing chisels



Riveting header



Knock-out chisel



Shearing chisel

Riveting headers (set rivets)

- For riveting hammers and holders
- For half-round rivet DIN 660 and 124

Rivet Ø	Order No.
Insert end R 23 × 65 mm	
6	5236606
8	5236608
10	5236610
12	5236612
13 14	5236614
16	5236616
18	5236618
19	5236619
20	5236620
Insert end R 31 × 70 mm	
10	5238610
12	5238612
13 14	5238614
16	5238616
18	5238618
19	5238619
20	5238620
22	5238622
24 25	5238624
27	5238627
28	5238628
30	5238630
31	5238631
33	5238633
34	5238634
36	5238636
37	5238637

Knock-out chisels (remove)

Rivet Ø	Cone Ø	Order No.
Insert end R 23 × 65 mm		
8-10	6 10	5236510
10-13	8 12	5236512
12-14	10 14	5236514
14-16	12 16	5236516
16-19	14 18	5236518
18-20	16 20	5236520
Insert end R 31 × 70 mm		
8-10	6 10	5238510
10-13	8 12	5238512
12-14	10 14	5238514
14-16	12 16	5238516
16-19	14 18	5238518
18-20	16 20	5238520
19-22	18 22	5238522
22-25	20 24	5238524
24-28	22 27	5238527
27-31	24 30	5238530
30-34	27 33	5238533

Shearing chisel

Effect. length mm	Width mm	Order No.
Insert end R 23 × 65 mm		
140	30	30536140
170	20	31809016
Insert end R 31 × 70 mm		
220	30	30538141