



# Zubehör

## Variacor®-swivel joint

### For all airtools



Variable swiveling



Example G 201 HV



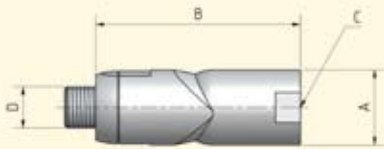
### More flexibility

The Variacor®-swivel joint can be used with all air tools and inelastic hoses.

#### System features

- No deviation of the hose means longer lifetime
- Less stress on the workers wrist and muscles means comfortable work
- Efficient: low pressure decrease, connection directly to the tool, hose and tool can be positioned in an optimal way

### Dimensions



Connection	A	B	C	
			internal thread	external thread
1/4" × 1/4"	24.0	67	G 1/4"	G 1/4"
3/8" × 3/8"	29.5	82	G 3/8"	G 3/8"
1/2" × 1/2"	29.5	82	G 1/2"	G 1/2"



# Accessories

## Variacor®-swivel joint 90° pivoting, 360° turning



### Technical data

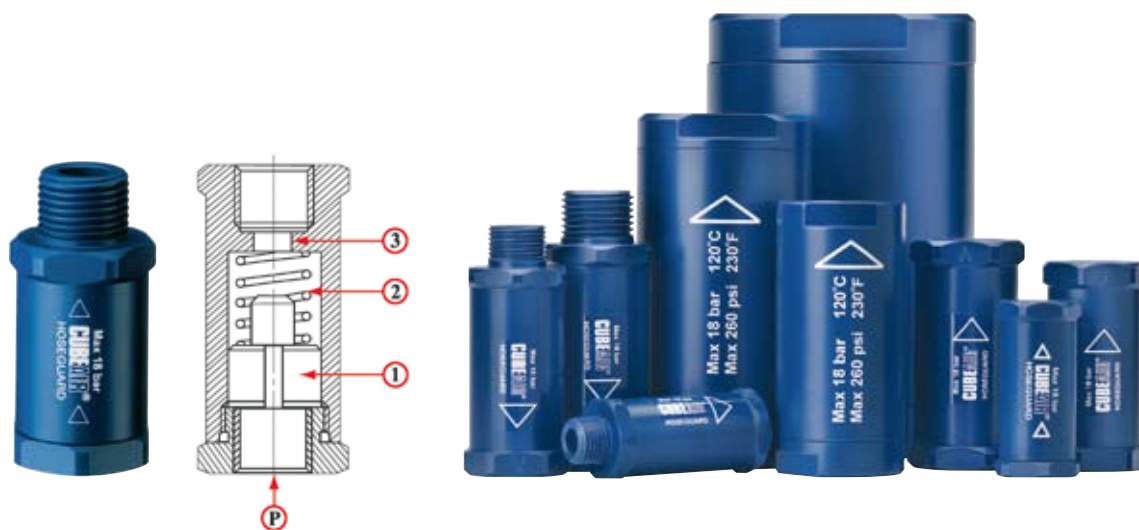
Connection	Thread	Air flow l/sec	Weight g	Ø internal mm	Order No.
1/4" × 1/4"	internal / external	12	72	7	60001-60-6
3/8" × 3/8"	internal / external	30	126	11	60001-61-6
1/2" × 1/2"	internal / external	30	132	11	60001-62-6

Max. 10 bar air pressure. Temperature range min. – max.: -10 to +70 °C.



# Accessories

## HoseGuard®- protection shut-off valve



Function scheme

HoseGuard®

### Air system breakage protection beware of accidents!

The HoseGuard®-protection protects personnel, machines and equipment against unpredictable damage which are common in case of a broken hose under pressure in these cases the shut-off valve throttles down the air pressure automatically and immediately.

#### Safety and comfort

- **Maintenance friendly**  
Repair Possible While Plant Is Still Working
- **Cost Saving**  
Economic, Competitive Pricing - No Superfluous Repairs
- **International safety standards**  
Complies with the EU-Norm EN 983, § 5.3.4.3.2\* und ISO 4414
- **Easy handling**  
No settings needed, reliable protection against manipulation
- **Compact and variable**  
Low weight, compatible with all compressed air systems, also as air flow limitation

#### Description

(see drawing above)

The air gets in at → P. The air stream passes the stamp → 1 and flows through the seating → 3. The air is slowed down by longitudinal groovings on the upper side of the stamp. At an excessive air flow the air cannot pass the stamp fast enough and presses it against the spring → 2 towards the seating.

#### Applications and installation

HoseGuard® shall be used with clean and dry air and offers optimum safety in every compressed air system, especially as an air flow limitation. With breaking on leaking (succeeding the allowed air flow) HoseGuard® closes the system concerned automatically by protecting it from further air feeding. The unconcerned system stays intact. After repairing the damaged hose. HoseGuard® allows the hose to be refilled and set under pressure again automatically. Once the pressure level is reached, HoseGuard® opens automatically and allows to go on with working.



### No further whipping air supply hoses!

Thread	Connection	Length mm	Ø SW mm	Air flow * l/min	Weight g	Order No.
internal, both sides	1/4"	48	22	0 – 560	30	60003-74-6
external / internal	1/4"	58	22	0 – 560	36	60003-65-6
internal, both sides	3/8"	59	27	0 – 950	58	60003-75-6
external / internal	3/8"	71	27	0 – 950	62	60003-66-6
internal, both sides	1/2"	65	30	0 – 2 300	78	60003-76-6
external / internal	1/2"	80	30	0 – 2 300	85	60003-77-6
internal, both sides	3/4"	76	30/36	0 – 3 800	107	60003-78-6
internal, both sides	1"	100	41/50	0 – 6 500	300	60003-79-6
internal, both sides	2"	130	70/80	0 – 16 000	775	60003-80-6

Max. ingoing pressure 18 bar, temperature range –20 to +80 °C.

From 1" ingoing pressure max. 35 bar, temoerature range –20 to +120 °C.

Air flow at 6 bar.

### \* EU-Norm EN 983-1996

#### § 5.3.4.3.2

»Whenever a damage of a compressed air hose may cause danger through whipping or through exhaust of the compressed medium, the hose must be held or protected.«

HoseGuard® complies to this Norm.

# Accessories

## Spring tensions, hose balancers



Spring tension

Hose balancer

### Spring tensions

- Housing: impact-resistant plastic
- Rope housing: plastic
- Housing cover: steel sheet
- Pull of the rope control
- Snap hook
- Fully variable load control by clamping screw

<b>Spring tension</b>				
Order No.		38570-00-6	38580-00-6	38590-00-6
Ultimate load	kg	0.3 – 1.2	1.0 – 2.0	2.0 – 3.0
Cable extension	mm	1 200	2 000	2 000
<b>Spring tension</b>				
Order No.		38600-00-6	38610-00-6	38620-00-6
Ultimate load	kg	3.0 – 5.0	6.0 – 8.0	8.0 – 10.0
Cable extension	mm	3 000	3 000	2 000

### Hose balancer

- Housing and hose housing: impact- and abrasion-resistant plastic
- Hose I. D. 6 mm with quick release fastener coupling
- Turning coupling for tool air supply R 1/4 "
- Security chain to prevent hose from falling down
- Hose extension 0.8 m
- Max. operating pressure 10 bar
- Flow rate 860 l / min at 6 bar

<b>Hose balancer</b>				
Order No.		29946-50-6	29946-51-6	
Ultimate load	kg	0.4 – 1.2	1.2 – 2.2	
Hose extension	mm	800	800	

# Accessories

## Service units, pressure reducers, special oil



Service unit and compressed air special oil



Pressure reducer and accessories



### Service units

- Block-built
- Consist of pressure reducer and mist lubricator

<b>Connection</b>		<b>1/4"</b>	<b>3/8"</b>	<b>1/2"</b>	<b>1"</b>
Order No.		030 290 74	030 291 74	030 292 74	030 293 74
Operat. pressure min. – max.	bar	0.5 – 16	0.5 – 16	0.5 – 16	0.5 – 16
Flow rate max.	m <sup>3</sup> /min	0.57	1.20	1.20	1.90
Width × Height	mm	80 × 190	124 × 250	124 × 250	140 × 320

### Pressure reducers

- Block-built
- Manual condensate drain

<b>Connection</b>		<b>1/4"</b>
Order No.		030 280 74
Operating pressure min. – max.	bar	0,5 – 16
Flow rate max.	m <sup>3</sup> /min	0,83
Width × Height	mm	40 × 190

### Accessories

<b>Distribution unit</b>	<b>R 3/8"</b>	<b>R 3/8"</b>	<b>R 1/2"</b>
Order No.	9325215	9325216	9325217
Outlets	2	3	3

<b>Double nipple</b>	<b>1/4"</b>	<b>3/8"</b>	<b>1/2"</b>
Order No.	49410-50-6	49410-51-6	49410-52-6

<b>Reducing nipple</b>	<b>1/2" × 3/8"</b>	<b>1" × 3/4"</b>
Bestell-Nr.	9325210	9325211

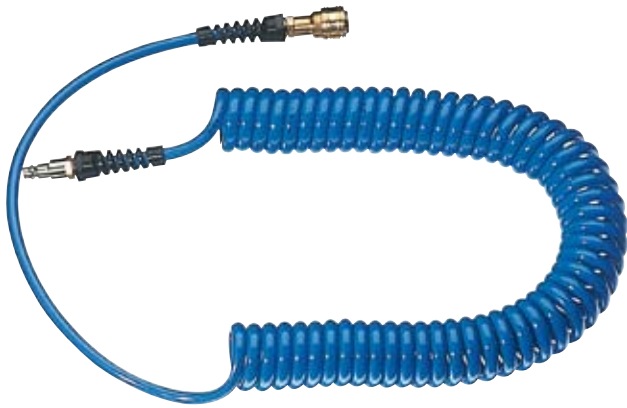
### Compressed air special oil

- For mist lubricators and service units
- According to DIN 51 524-2 with viscosity class VG 32 according to ISO 3448
- Viscosity at 40 °C: –32 mm<sup>2</sup>/s; 32 cSt

<b>Special oil</b>	<b>Bottle 1 Litre</b>	<b>Can 10 Liter</b>
Order No.	095 055 33	095 085 33

# Accessories

## Spiral hoses



Spiral hose A



Spiral hose B

### Spiral hose A

- Polyurethane
- Fitted with one-hand coupling and plug-in nipple DN 7.2

Dimensions internal / external mm	Diameter external mm	Effective length max. m	Order No.
6.5 / 10.0	52	3	9361817
6.5 / 10.0	52	6	9361818
8.0 / 12.0	65	6	9361819
9.0 / 13.0	68	6	9361820

### Spiral hose B

- Polyurethane
- Fitted with a double-sided connection thread

Dimensions internal / external mm	Diameter external mm	Effective length max. m	Order No.
6 × 8 / R 1/4" a	75	5	9361815
9 × 12 / R 3/8" a	140	5	9361816

### Fitting accessories

#### One-hand coupling

Internal thread steel	Order No.
1/4"	48909-53-6
3/8"	48909-54-6



One-hand coupling

#### Plug-in nipple

Internal thread steel	Order No.
1/4"	48909-62-6
3/8"	48909-63-6



Plug-in nipple



PVC rubber hose



Compressed air rubber hose

### PVC rubber hoses

- With polyester reinforcement threads
- For operating pressure 10 bar
- Temperature range: -20 to +60 °C

Diameter internal, mm	Diameter external, mm	Colour	Order No. sold by meter
5	7	blue	9361213
6	10	black	9361532
8	12	black	9361158
9	14	transparent	9361160
10	16	transparent	9361191

### Compressed air rubber hoses

- DIN 20018
- With fabric insert for operating pressure 10 bar
- Temperature range: -20 to +60 °C

Diameter internal, mm	Diameter external, mm	Colour	Order No. sold by meter
10	22	black	9361114
13	25	black	9361115
16	26	black	9361116
19	31	black	9361117
25	39	black	9361118

# Accessories

## Hose clamps, hose clips



Hose clamp



Double ear hose clamp

### Hose clamps, two-piece

Clamping range Hose diameter, external mm	Order No.
22 – 29	9361039
28 – 34	9361040

### Double ear hose clamps

Clamping range Hose diameter, external mm	Order No.
9 – 11	9361058
11 – 13	9361047
13 – 15	9361048
15 – 18	9361052
23 – 27	9361063



Hose clip

### Hose clips

- DIN 3017
- Band and lock of steel W1 zincod

Clamping range Hose diameter, external mm	Order No.
10 – 16	9361029
12 – 20	9361036
20 – 32	9361037
25 – 40	9361038

# Accessories

## One-hand quick couplings, plug-in nipples



One-hand quick couplings (versions)



Plug-in nipples (versions)

### One-hand quick couplings | DN 7.2 (brass)

– max. Durchfluß 900 ℓ /min.

Connection G	Thread	Order No.
1/4 "	external	48909-41-6
3/8 "	external	48909-42-6
1/2 "	external	48909-43-6
LW 6	hose socket	48909-25-6
LW 9	hose socket	48909-26-6
LW 13	hose socket	48909-27-6

### Plug-in nipples | DN 7.2 (brass)

Connection G	Thread	Order No.
1/4 "	external	48909-23-6
LW 6	hose socket	9361482
LW 9	hose socket	48909-45-6
LW 13	hose socket	48909-46-6



One-hand quick couplings (versions)



Plug-in nipples (versions)

### One-hand quick couplings | DN 7.4 (steel)

– max. Durchfluß 1 800 ℓ/min

Connection G	Thread	Order No.
1/4 "	external	48909-50-6
3/8 "	external	48909-51-6
1/2 "	external	48909-52-6
1/4 "	internal	48909-53-6
3/8 "	internal	48909-54-6
1/2 "	internal	48909-55-6
LW 8	hose socket	48909-56-6
LW 10	hose socket	48909-57-6
LW 13	hose socket	48909-58-6

### Plug-in nipples | DN 7.4 (steel)

Connection G	Thread	Order No.
1/4 "	external	48909-59-6
3/8 "	external	48909-60-6
1/2 "	external	48909-61-6
1/4 "	internal	48909-62-6
3/8 "	internal	48909-63-6
LW 8	hose socket	48909-64-6
LW 10	hose socket	48909-65-6
LW 13	hose socket	48909-66-6

# Accessories

## Thread sleeves, air nozzles, claw couplings



Thread sleeve (version)



Air nozzle (version brass)

### Thread sleeves with external thread

Connection G	For hose I.D.	Order No.
1/8"	6	9361381
1/4"	6	47092-05-6
1/4"	8	9361330
1/4"	10	9361479
3/8"	10	9361471
3/8"	13	9361477
1/2"	15	9361478

### Air nozzles

For hose mm	Length mm	Nozzle Ø   mm	Order No.
LW 10 aluminium	115	2	09505-60-0
LW 13 aluminium	115	2	09504-60-0
LW 13 brass	115	2	09506-60-0



Internal thread coupling



Hose coupling



Rubber sealing ring

### Claw couplings | DIN 3489

Connection G	Thread	Order No. with rubber ring
3/8"	internal	9361347
1/2"	internal	9361348
3/4"	internal	9361349
1"	internal	9361350
1/4"	external	9361336
3/8"	external	9361337
1/2"	external	9361338
3/4"	external	9361339
1"	external	9361440
LW 10	hose coupling	9361356
LW 13	hose coupling	9361357
LW 15	hose coupling	9361358
LW 19	hose coupling	9361359

### Accessories for claw couplings

Accessory	Order No.
<b>Rubber sealing ring</b>	9361364



### 1 Safety couplings

- Mounted at compressor side
- Residual pressure controlled two step release with sliding sleeve
- According to DIN EN 983 safety regulations
- Suitable for Euro coupling acc. DIN 14152 and for Walter coupling LP 006
- Nominal width 6 mm
- Max. air flow 1 200 ℓ/min

Connection	Thread	Order No.
G		
1/4 "	external	9361391
3/8 "	external	9361392
1/2 "	external	9361393
1/4 "	internal	9361394
3/8 "	internal	9361395
1/2 "	internal	9361396

### 2 Safety couplings with captive sealings and plastic sleeve

- Complies to safety standard DIN EN 983
- Suitable to plug-in nipples with a i.w. of 7.2 mm
- Max. air flow 1 400 ℓ/min
- Coupling force at 6 bar: 95 N

Connection	Thread	Order No.
G		
1/4 "	external	9361411
3/8 "	external	9361412
1/2 "	external	9361413

### 3 Safety venting couplings with plastic sleeve

- Complies to safety standard DIN EN 983
- Suitable to plug-in nipples with a i.w. of 7.2 mm
- Max. air flow 1 400 ℓ/min
- Coupling force at 6 bar: 95 N

Connection	Connection type	Order No.
G		
6 mm	Schlauch	9361414
9 mm	Schlauch	9361415
13 mm	Schlauch	9361416

### 4 Compressed air couplings with extreme air flow

- Max. air flow 2 150 ℓ/min
- Suitable to plug-in nipples with a i.w. of 7.2 mm
- Coupling force at 6 bar: 75 N
- Connection type: external thread with sealing coating

Connection	Thread	Order No.
G		
R 1/4 "	external	9361417
R 3/8 "	external	9361418
R 1/2 "	external	9361419

### 5 Compressed air couplings with extreme air flow

- Suitable to plug-in nipples with a i.w. of 7.2 mm
- Max. air flow 2 150 ℓ/min
- Coupling force at 6 bar: 75 N

Connection	Connection type	Order No.
G		
6 mm	Hose	9361420
9 mm	Hose	9361421
13 mm	Hose	9361422



Further information → [www.MANNESMANN-DEMAG.com](http://www.MANNESMANN-DEMAG.com)

**Worldwide**

**Sales and services**

- |             |                |
|-------------|----------------|
| Berlin      | Australia      |
| Bielefeld   | Austria        |
| Bochum      | Belgium        |
| Bremen      | Brazil         |
| Dresden     | Canada         |
| Düsseldorf  | Croatia        |
| Erfurt      | Czech Republic |
| Essen       | Finland        |
| Freiburg    | France         |
| Hagen       | Hongkong       |
| Hamburg     | Hungary        |
| Hannover    | India          |
| Kiel        | Iran           |
| Köln        | Italy          |
| Magdeburg   | Luxembourg     |
| Mainz       | Netherlands    |
| Mühlheim    | Mexico         |
| München     | Poland         |
| Nürnberg    | Portugal       |
| Oberhausen  | Slovakia       |
| Potsdam     | Slovenia       |
| Rheinfelden | Spain          |
| Saarbrücken | Sweden         |
| Schwerin    | Switzerland    |
| Singen      | Turkey         |
| Stuttgart   | Ukraine        |
| Wiesbaden   | United Kingdom |
|             | USA            |

## **Colophon**

Concept and design:

KOMA AMOK®

Kunstabüro für Gestaltung, Stuttgart

Photography:

Blühdorn Werbefotografie +, Stuttgart-Fellbach

MANNESMANN DEMAG

PhotoDisc

Print:

Druckhaus Waiblingen

Printed in Germany, © 2010

All rights reserved. No unauthorised use or copying of the contents, particularly trade marks, drawings of the models, article numbers or photographs. No reprinting and mechanical or digital reproduction, even of excerpts, without the formal permission by MANNESMANN DEMAG.

Technical as well as colour and design alterations, serving the product improvement, are subject to change. Errors and errata excepted.